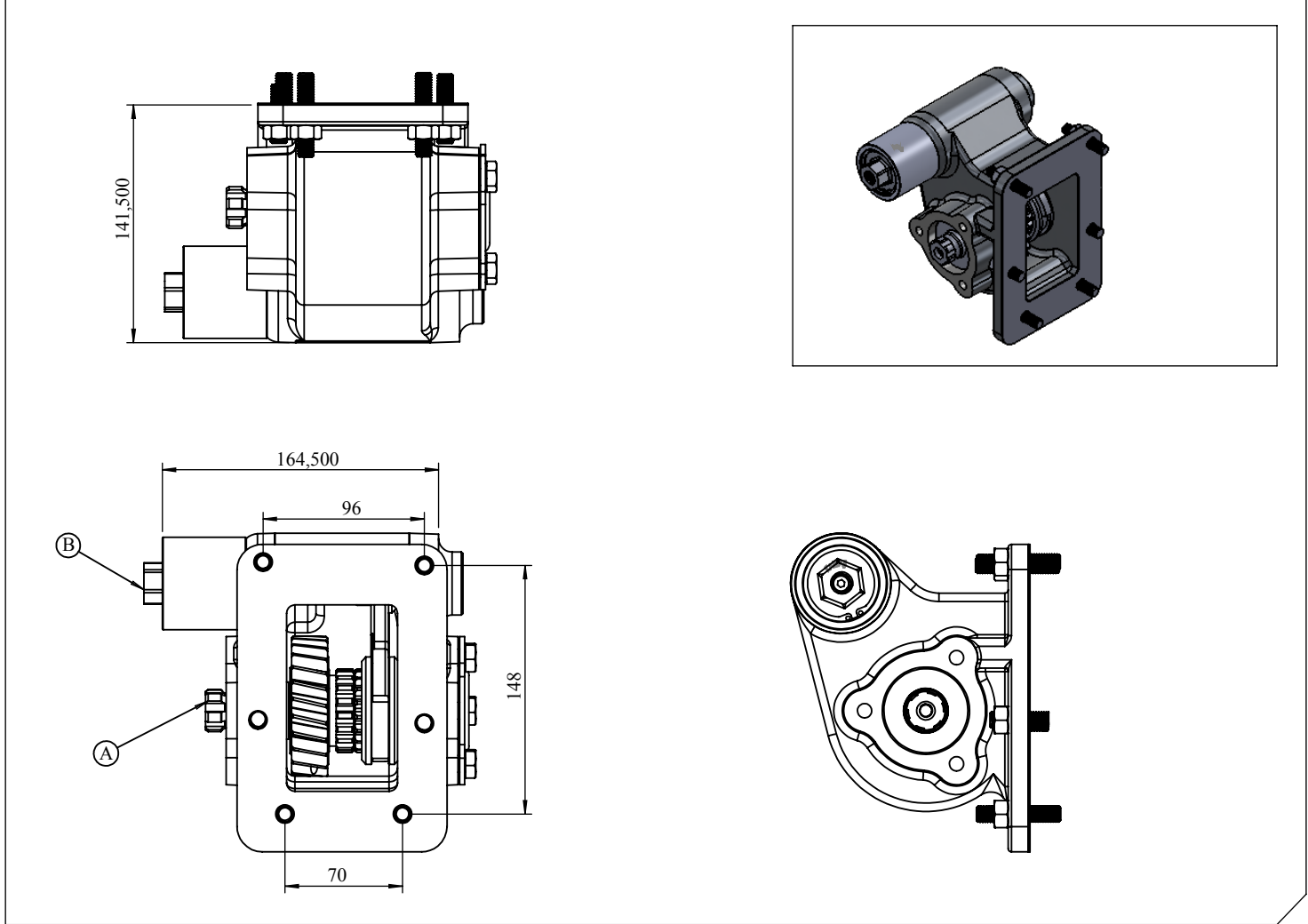


|                     |                       |
|---------------------|-----------------------|
| <b>Vehicle Type</b> | HD 75 / HD 78 HYUNDAI |
| <b>Gearbox Type</b> | 5S 6853               |

|                         |                           |
|-------------------------|---------------------------|
| <b>Product Code</b>     | <b>HYD.01.6853V.CT.KF</b> |
| <b>Revision No-Date</b> | 01/20-07-2017             |



### Products Views



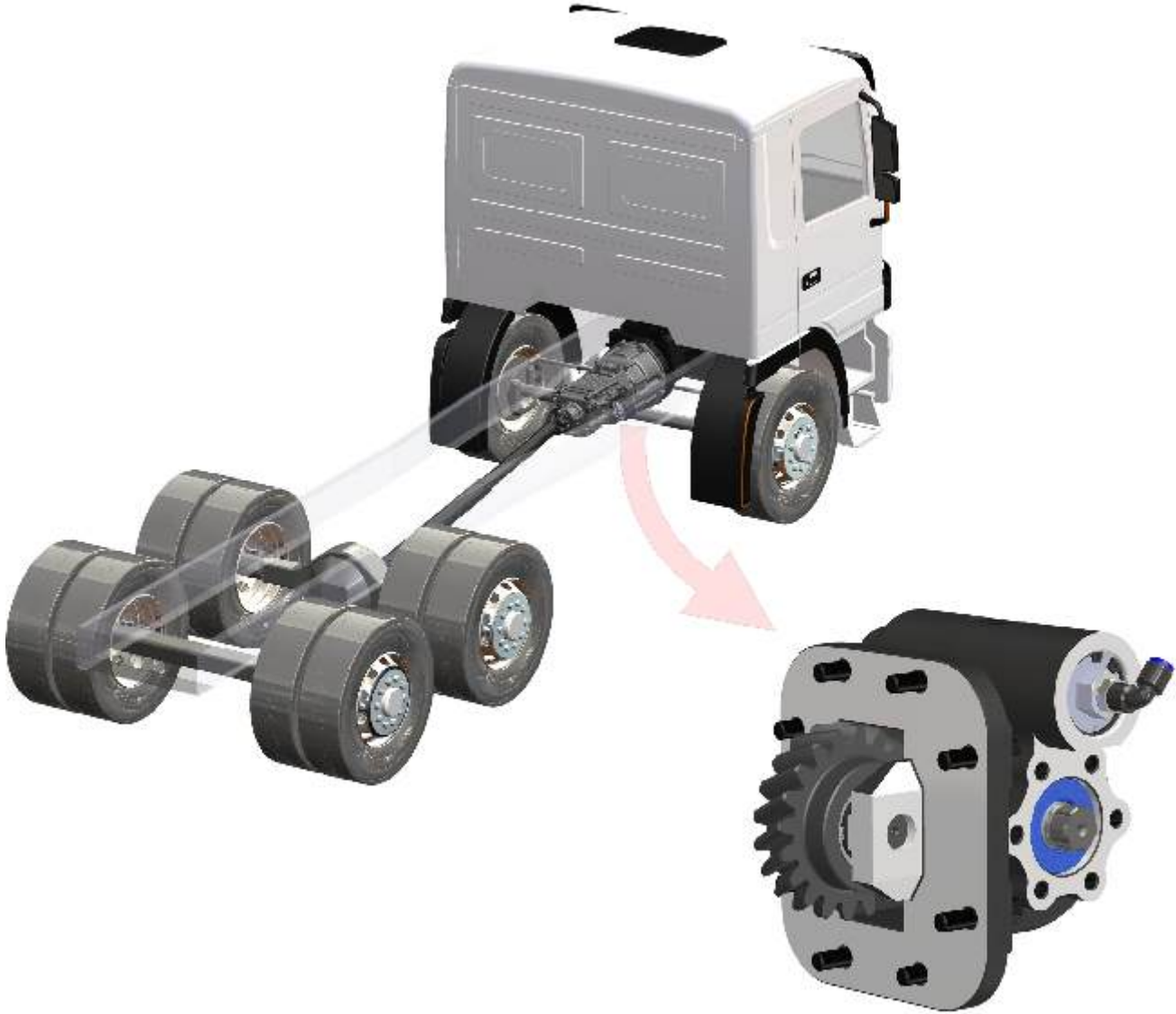
### Component Details

- Ⓐ : PTO Çıkışı (Standart DIN 5463 6X21X25 UNI 3 Delikli)  
Pistonlu pompaya akuple (4 delikli ISO bağlantı)  
Kaplınli (flaşlı bağlantı)
- Ⓑ : Vakum Girişi R1/4"

- Ⓐ : PTO Output (Standard DIN 5463 6X21X25 UNI 3 Bolt)  
Direct mounting ISO 4 bolt mtg. adapter  
Drive flange
- Ⓑ : Vacuum Inlet R 1/4"

### Technical Details

| Outputs | Power     | Torque        |      | Internal Ratio | Mounting Side | Control Type |
|---------|-----------|---------------|------|----------------|---------------|--------------|
|         | @1000 rpm | Nm (@1000rpm) | Kgm  |                | Weight        |              |
| A       | 13 kW     | 135           | 13.7 | 1/1            | LEFT SIDE     | VACUUM       |
|         |           |               |      |                | 6<br>kg       |              |
|         |           |               |      |                |               |              |



**VEHICLE TYPE**

HD 120 HYUNDAI HD72 / HD 78 / HD 65 / HD 160

**TRANSMISSION TYPE**

KH10 (6,967)

Kozmaksan Hyundai Power Take OFFs designed for Hyundai series main transmissions. Kozmaksan HYD PTOs has Single output model, Side Mounting type option and available for UNI&ISO mounting housing or suitable for flange connections.

Applications;

- Garbage Truck
- Crane Truck
- Dump Truck

Vehicle Type

HYUNDAI

PNEUMATIC

SIDE MOUNTING

Transmission Type

KH10 (6,967)

HYD.03.120.H

Product Code

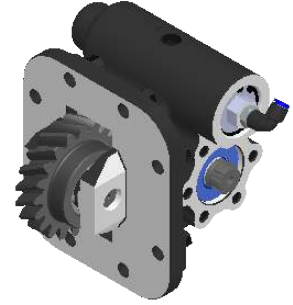
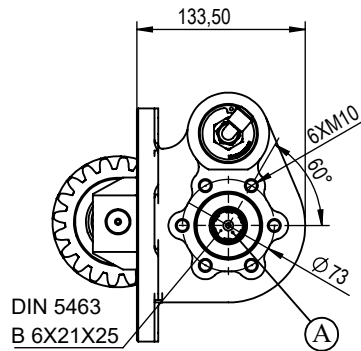
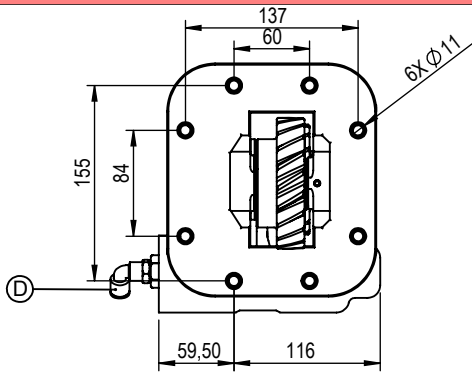
02

14/02/2019

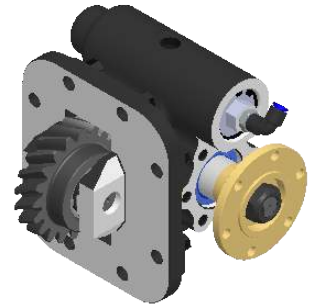
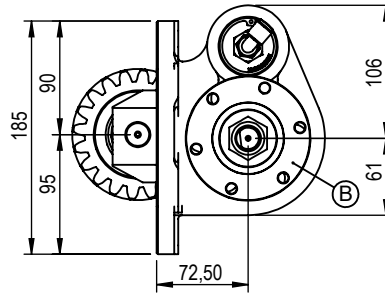
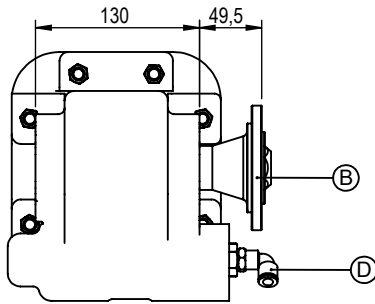
02

Rev. Date

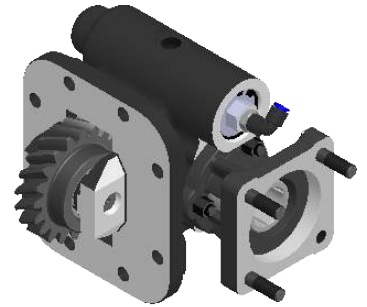
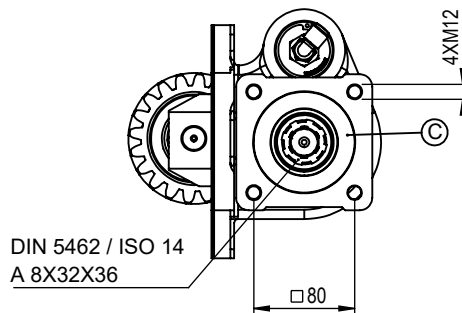
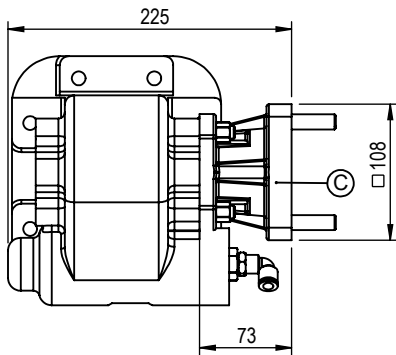
## UNI OUTPUT



## FLANGE OUTPUT



## ISO OUTPUT



A DIN 5463 6X21X25 UNI 3 Bolts Output

B ISO 7647-7646 Standard Flange Output

C ISO 14 - DIN 5462 8X32X36 Output

D Air Inlet R 1/8"

|                    | UNI Output         | FLANGE Output | ISO Output |
|--------------------|--------------------|---------------|------------|
| Power(kW)@1000 RPM | 23                 | 36,7          | 23         |
| Max. Torque (Nm)   | 220                | 350           | 220        |
| Weight (Kg)        | 13                 | 14            | 15         |
| Ratio              | 1/1.17             |               |            |
| Mounting Type      | Left Side Mounting |               |            |
| Sense of Rotation  | CW                 |               |            |

- Kozmaksan has all rights to change information in this catalogue without announcing it. This document is representing general information. It is not a contract.  
 - All information belongs to only PTO/Split Shaft. Do not use PTO/Split Shaft, if it is not suitable for your engine and main transmission.  
 - Pumps, shafts and other parts should not be longer or heavier than approved distance and weight by the manufacturer of main transmission and engine.

KozmaksanPTO

kozmaksanpto

kozmaksan-hydraulics-pt0

**HYD.03.120**

Product Code

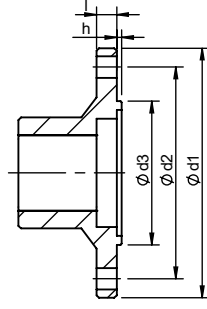
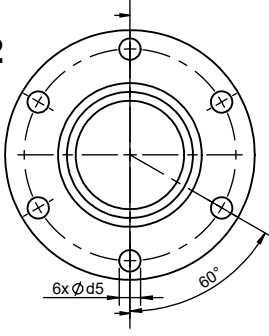
01

14.02.2019

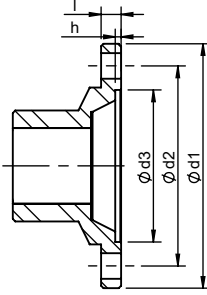
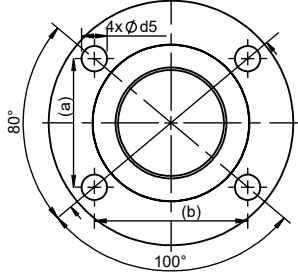
3/3

Rev. Date

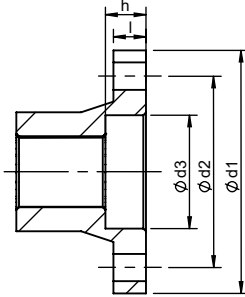
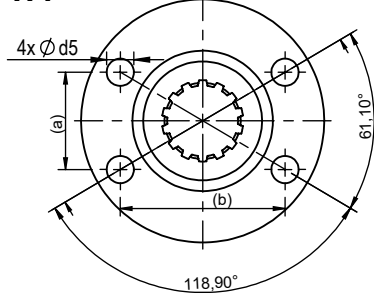
1.1  
1.2



1.3



1.4

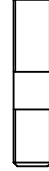


|     | Ø d1 | Ø d2  | Ø d3  | Ø d5 | l  | h   | P [°] | (a) x (b) |
|-----|------|-------|-------|------|----|-----|-------|-----------|
| 1.1 | 100  | 84    | 57    | 8,1  | 8  | 2,3 | 6     | -         |
| 1.2 | 90   | 74,5  | 47    | 8,1  | 8  | 2,3 | 6     | -         |
| 1.3 | 97   | 79,37 | 60,32 | 10,1 | 8  | 2,3 | 4     | 51 x 60,8 |
| 1.4 | 90   | 70,83 | 42    | 10,1 | 12 | 9   | 4     | 36 x 61   |

All dimensions are mm.

(PTO Mounting Parts)

5

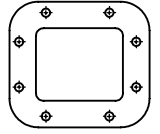


6 ] & .



6 ] & .

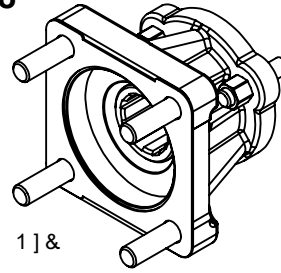
7



1 ] &

ISO Adapter

8



1 ] &

UNI Pump Mounting Parts

5

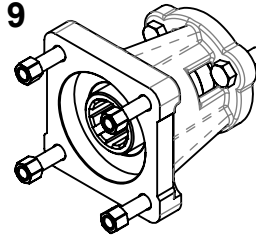


3 ] & .



3 ] & .

9



| No  | Code        | Description            | No | Code     | Description    |
|-----|-------------|------------------------|----|----------|----------------|
| 1.1 | C06-083-2   | ISO 7646-100x6x8       | 9  | AKP.PP.1 | GC'5 8 5 DH9 F |
| 1.2 | C06-083-3   | ISO 7646-90x6x8        |    |          |                |
| 1.3 | C06-083-1   | ISO 7647-SAE 1300x4x10 |    |          |                |
| 1.4 | C06-185     | Ø90 : B; 9             |    |          |                |
| 5   | T07-004     | M10x1,5x45 mm SHI 8    |    |          |                |
| 6   | T08-001     | M10x1,5 BI H           |    |          |                |
| 7   | T04-068     | ; 5 G?9H               |    |          |                |
| 8   | AKP.PP.2.52 | GC'5 8 5 DH9 F         |    |          |                |

- Kozmaksan has all rights to change information in this catalogue without announcing it. This document is representing general information. It is not a contract.  
- All information belongs to only PTO/Split Shaft. Do not use PTO/Split Shaft, if it is not suitable for your engine and main transmission.  
- Pumps, shafts and other parts should not be longer or heavier than approved distance and weight by the manufacturer of main transmission and engine.

KozmaksanPTO

kozmaksanpto

kozmaksan-hydraulics-pt



**VEHICLE TYPE**

**HYUNDAI**

**TRANSMISSION TYPE**

**T060S5 (5,810) T/M**

Kozmaksan Hyundai Power Take OFFs designed for Hyundai trucks. Kozmaksan Hyundai PTOs has Single output model, Side Mounting type option and available for UNI&ISO mounting housing or suitable for flange connections.

Applications;

- Garbage Truck
- Crane Truck
- Dump Truck

Vehicle Type

HYUNDAI

PNEUMATIC

SIDE MOUNTING

Transmission Type

T060S5 (5,810) T/M

HYD.06.60S5.H

Product Code

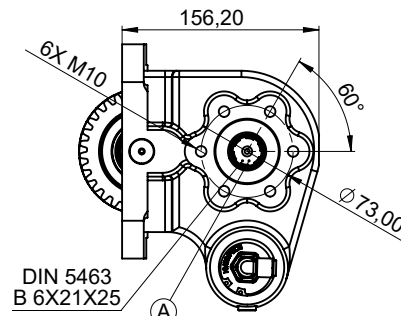
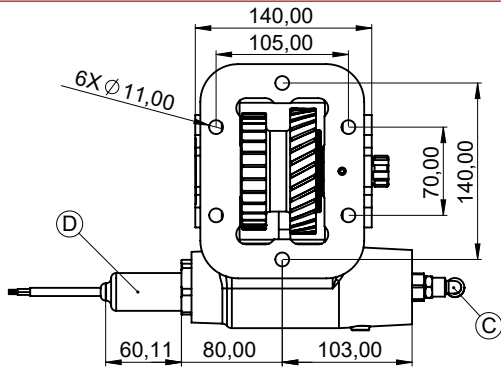
00

09.10.2019

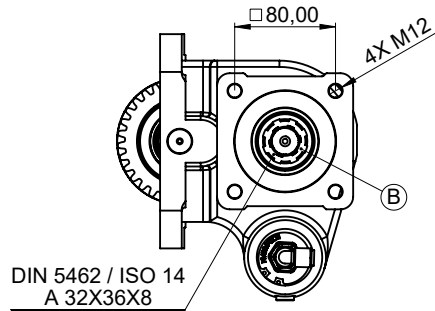
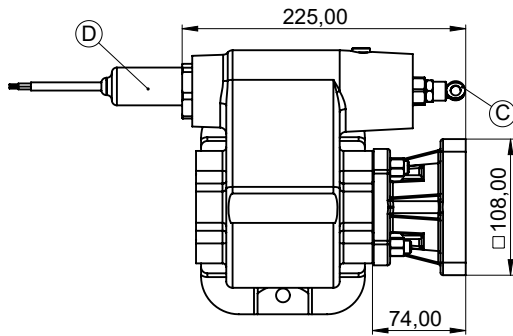
2/5

Rev. Date

## UNI OUTPUT

DIN 5463  
B 6X21X25

## ISO OUTPUT

DIN 5462 / ISO 14  
A 32X36X8

|   |   |
|---|---|
| A | DIN 5463 6X21X25 - UNI 3 Bolt Output          |
| B | ISO 14 - DIN 5462 8X32X36 - ISO 4 Bolt Output |
| C | Air Inlet R 1/4"                              |
| D | Engage/Disengage Sensor (Opt.)                |
|   |   |
|   |   |
|   |   |
|   |   |

|                    | UNI Output | ISO Output |  |
|--------------------|------------|------------|--|
| Power(kW)@1000 RPM | 23         | 23         |  |
| Max. Torque (Nm)   | 220        | 220        |  |
| Weight (Kg)        | 12,50      | 13,70      |  |
| Ratio              |            | 1/1,08↓    |  |
|                    |            |            |  |
| Mounting Type      | Left Side  |            |  |
| Sense of Rotation  |            |            |  |

- Kozmaksan has all rights to change information in this catalogue without announcing it. This document is representing general information. It is not a contract.  
- All information belongs to only PTO/Split Shaft. Do not use PTO/Split Shaft, if it is not suitable for your engine and main transmission.  
- Pumps, shafts and other parts should not be longer or heavier than approved distance and weight by the manufacturer of main transmission and engine.

KozmaksanPTO

kozmaksanpto

kozmaksan-hydraulics-pt

Vehicle Type

HYUNDAI

MECHANIC CONTOL

SIDE MOUNTING

Transmission Type

T060S5 (5,810) T/M

HYD.06.60S5.M

Product Code

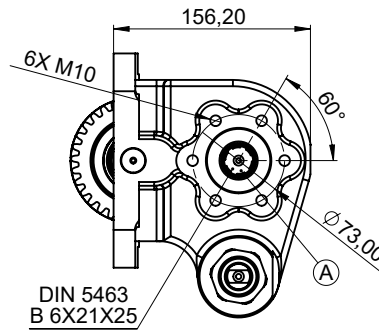
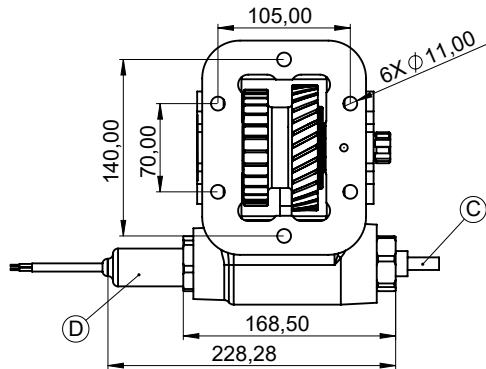
00

09.10.2019

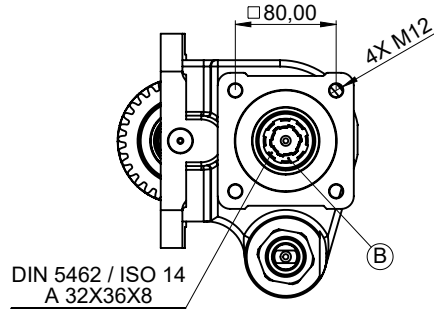
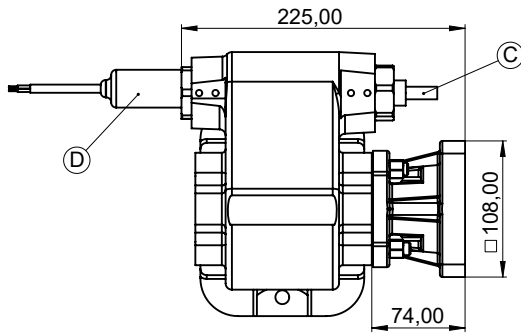
3/5

Rev. Date

## UNI OUTPUT



## ISO OUTPUT



|   |   |
|---|---|
| A | DIN 5463 6X21X25 - UNI 3 Bolt Output          |
| B | ISO 14 - DIN 5462 8X32X36 - ISO 4 Bolt Output |
| C | Mechanic Control System                       |
| D | Engage/Disengage Sensor (Opt.)                |
|   |   |
|   |   |
|   |   |
|   |   |

|                    | UNI Output | ISO Output |  |
|--------------------|------------|------------|--|
| Power(kW)@1000 RPM | 23         | 23         |  |
| Max. Torque (Nm)   | 220        | 220        |  |
| Weight (Kg)        | 12,50      | 13,70      |  |
| Ratio              | 1/1,08↓    |            |  |
|                    |            |            |  |
| Mounting Type      | Left Side  |            |  |
| Sense of Rotation  |            |            |  |

- Kozmaksan has all rights to change information in this catalogue without announcing it. This document is representing general information. It is not a contract.  
 - All information belongs to only PTO/Split Shaft. Do not use PTO/Split Shaft, if it is not suitable for your engine and main transmission.  
 - Pumps, shafts and other parts should not be longer or heavier than approved distance and weight by the manufacturer of main transmission and engine.

KozmaksanPTO

kozmaksanpto

kozmaksan-hydraulics-pto

Vehicle Type

HYUNDAI

VACUUM CONTROL

SIDE MOUNTING

Transmission Type

T060S5 (5,810) T/M

HYD.06.60S5.V

Product Code

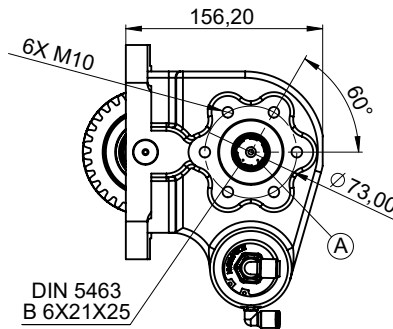
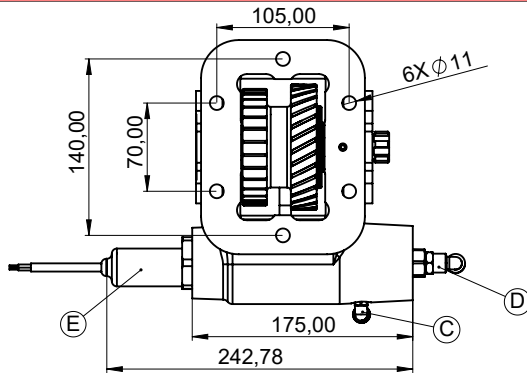
00

09.10.2019

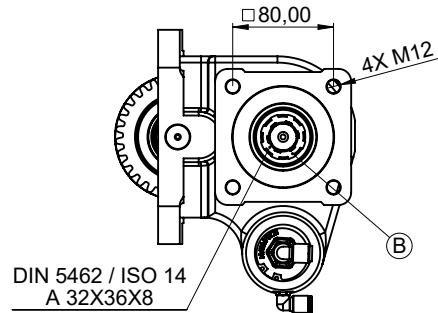
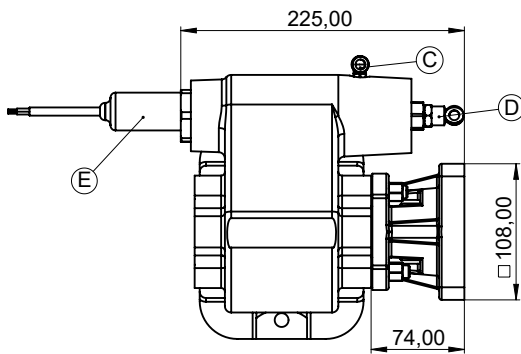
4/5

Rev. Date

## UNI OUTPUT



## ISO OUTPUT



- |   |   |
|---|---|
| A | DIN 5463 6X21X25 - UNI 3 Bolt Output          |
| B | ISO 14 - DIN 5462 8X32X36 - ISO 4 Bolt Output |
| C | Vacuum Inlet R 1/8"                           |
| D | Vacuum Inlet R 1/4" (Opt.-Double Actuator)    |
| E | Engage/Disengage Sensor (Opt.)                |
|   |   |
|   |   |
|   |   |
|   |   |

|                    | UNI Output | ISO Output |  |
|--------------------|------------|------------|--|
| Power(kW)@1000 RPM | 23         | 23         |  |
| Max. Torque (Nm)   | 220        | 220        |  |
| Weight (Kg)        | 12,50      | 13,70      |  |
| Ratio              |            | 1/1,08↓    |  |
|                    |            |            |  |
| Mounting Type      | Left Side  |            |  |
| Sense of Rotation  |            |            |  |

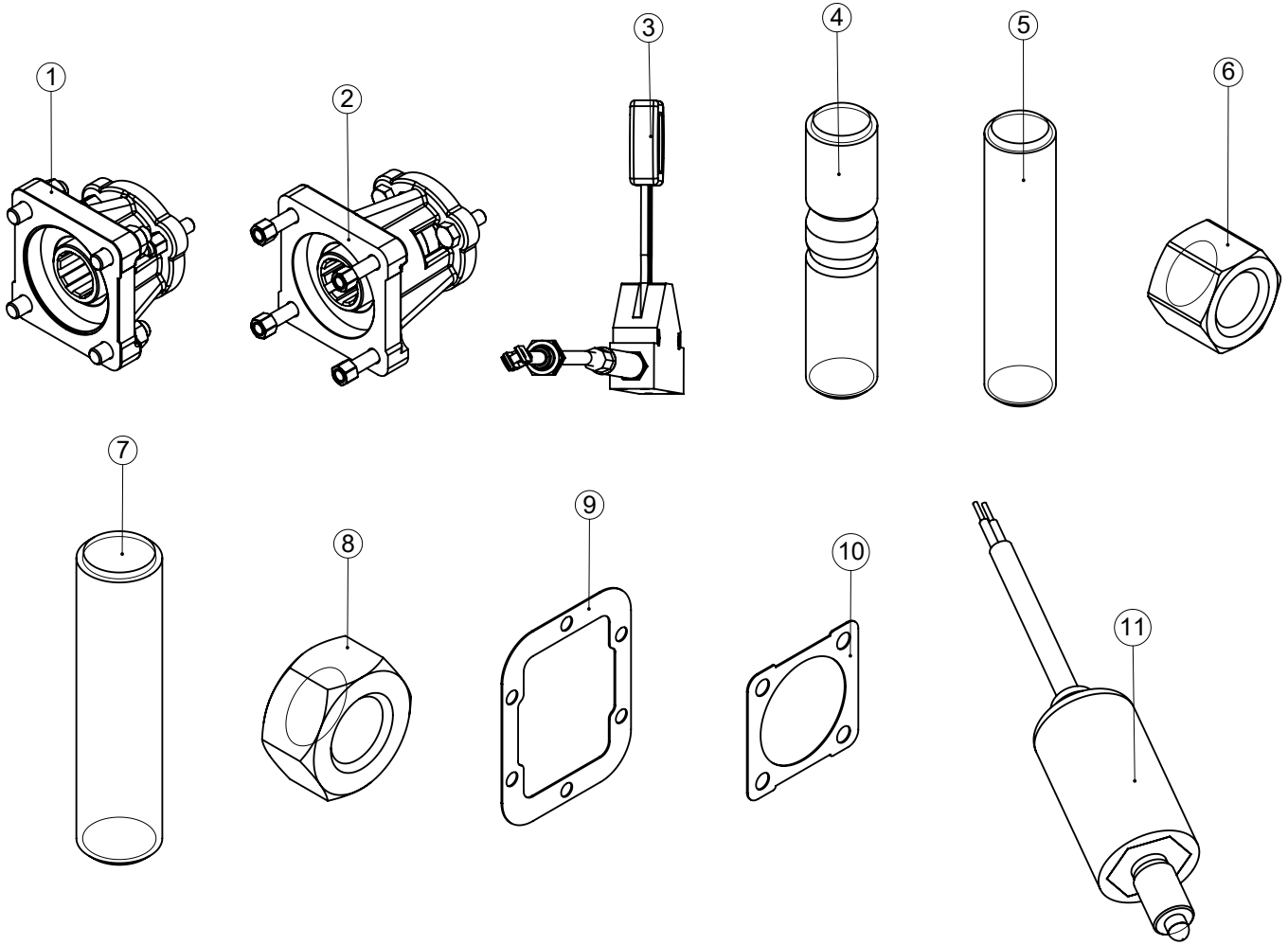
- Kozmaksan has all rights to change information in this catalogue without announcing it. This document is representing general information. It is not a contract.  
 - All information belongs to only PTO/Split Shaft. Do not use PTO/Split Shaft, if it is not suitable for your engine and main transmission.  
 - Pumps, shafts and other parts should not be longer or heavier than approved distance and weight by the manufacturer of main transmission and engine.

KozmaksanPTO

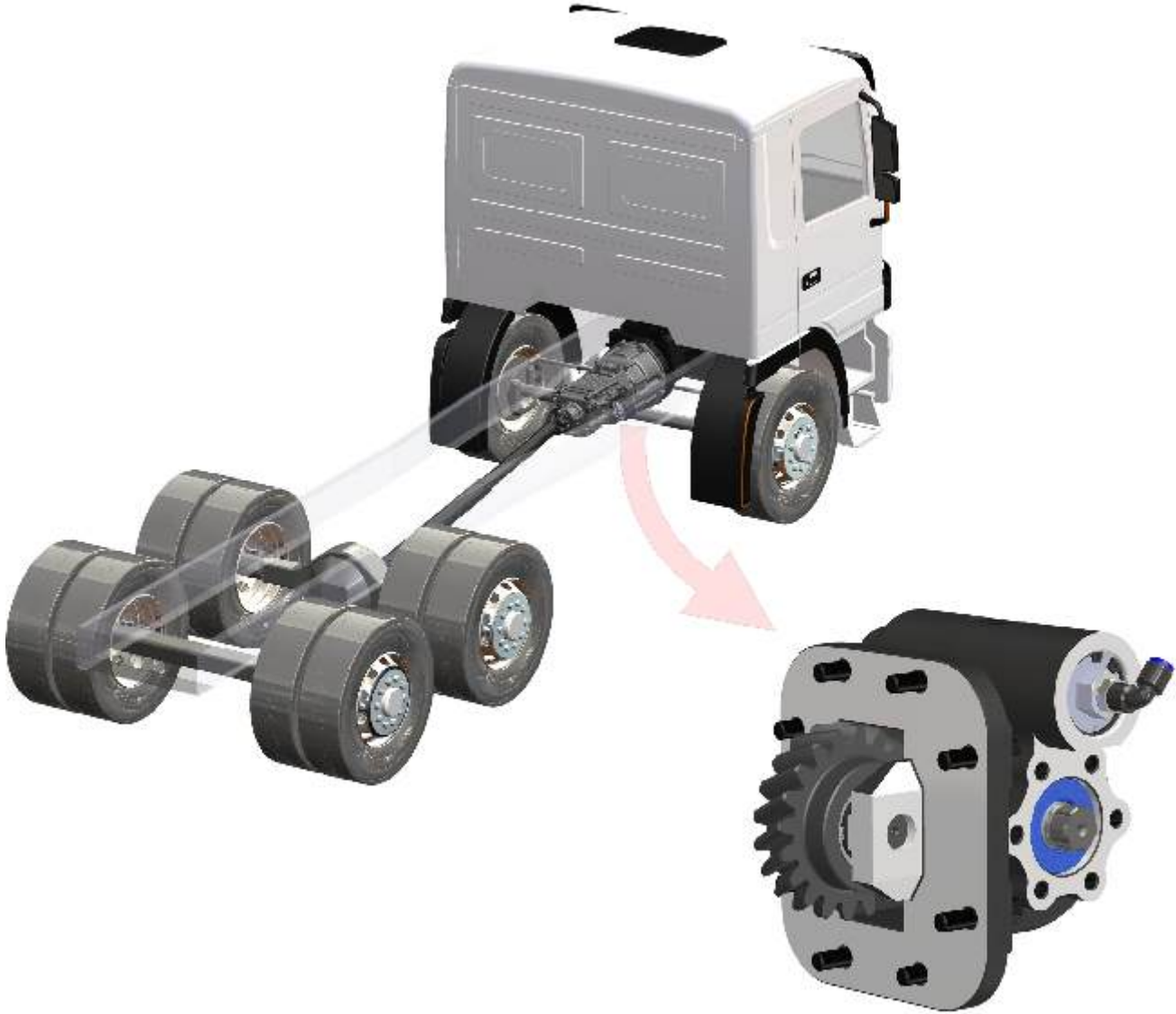
kozmaksanpto

kozmaksan-hydraulics-pto





| No | Code          | Description                    | No | Code    | Description                    |
|----|---------------|--------------------------------|----|---------|--------------------------------|
| 1  | AKP.PP.2.52   | UNI TO ISO Adapter (Short)     | 9  | T04-019 | Gasket (1mm)                   |
| 2  | AKP.PP.1      | UNI TO ISO Adapter (Long)      | 10 | T04-002 | 80X80 Gasket 1mm               |
| 3  | KTP50-55.3500 | 3.5 MT Control Cable and Lever | 11 | T12-029 | Engage/Disengage Sensor (Opt.) |
| 4  | T07-017       | M10X50 Stud                    | 12 |         |                                |
| 5  | T07-004       | M10X45 Stud 3 pcs              | 13 |         |                                |
| 6  | T08-001       | M10X1,5 Stud 6+3 pcs           | 14 |         |                                |
| 7  | T07-003       | M12X50 Stud 4 pcs              | 15 |         |                                |
| 8  | T08-006       | M12 Nut 4 Pcs                  | 16 |         |                                |



**VEHICLE TYPE**

HD 120 HYUNDAI HD72 / HD 78 / HD 65 / HD 160

**TRANSMISSION TYPE**

KH10 (6,967)

Kozmaksan Hyundai Power Take OFFs designed for Hyundai series main transmissions. Kozmaksan HYD PTOs has Single output model, Side Mounting type option and available for UNI&ISO mounting housing or suitable for flange connections.

Applications;

- Garbage Truck
- Crane Truck
- Dump Truck

Vehicle Type

HYUNDAI

PNEUMATIC

SIDE MOUNTING

Transmission Type

KH10 (6,967)

HYD.03.120.H

Product Code

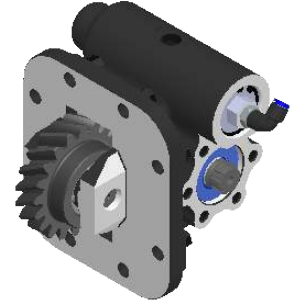
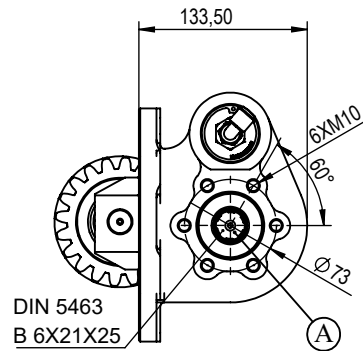
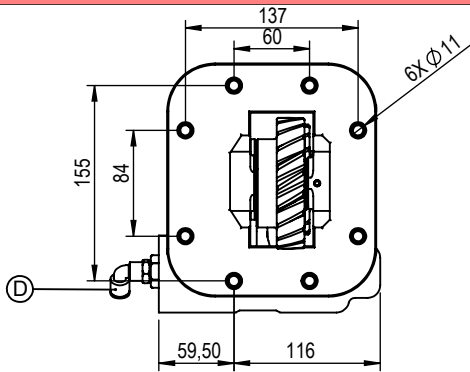
02

14/02/2019

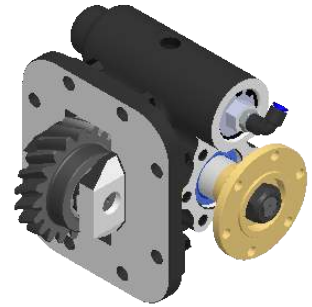
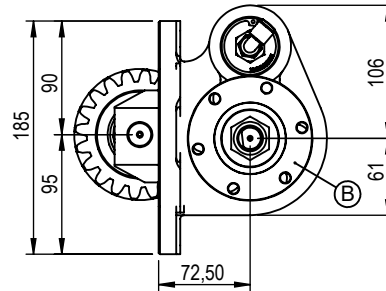
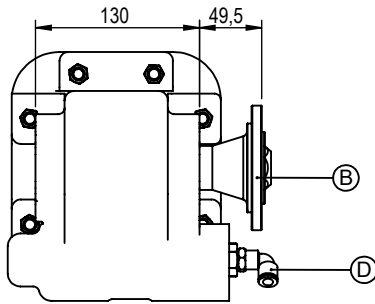
02

Rev. Date

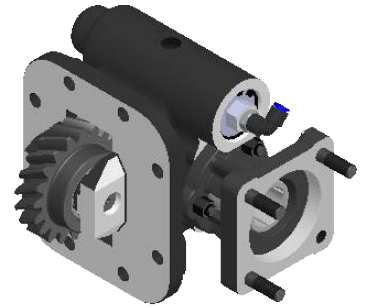
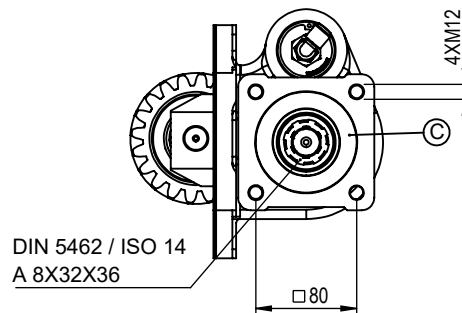
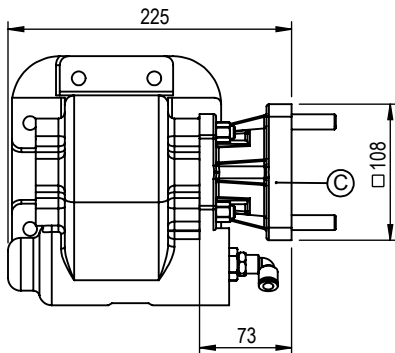
## UNI OUTPUT



## FLANGE OUTPUT



## ISO OUTPUT



A DIN 5463 6X21X25 UNI 3 Bolts Output

B ISO 7647-7646 Standard Flange Output

C ISO 14 - DIN 5462 8X32X36 Output

D Air Inlet R 1/8"

|                    | UNI Output         | FLANGE Output | ISO Output |
|--------------------|--------------------|---------------|------------|
| Power(kW)@1000 RPM | 23                 | 36,7          | 23         |
| Max. Torque (Nm)   | 220                | 350           | 220        |
| Weight (Kg)        | 13                 | 14            | 15         |
| Ratio              | 1/1.17             |               |            |
| Mounting Type      | Left Side Mounting |               |            |
| Sense of Rotation  | CW                 |               |            |

- Kozmaksan has all rights to change information in this catalogue without announcing it. This document is representing general information. It is not a contract.  
 - All information belongs to only PTO/Split Shaft. Do not use PTO/Split Shaft, if it is not suitable for your engine and main transmission.  
 - Pumps, shafts and other parts should not be longer or heavier than approved distance and weight by the manufacturer of main transmission and engine.

KozmaksanPTO

kozmaksanpto

kozmaksan-hydraulics-pt

**HYD.03.120**

Product Code

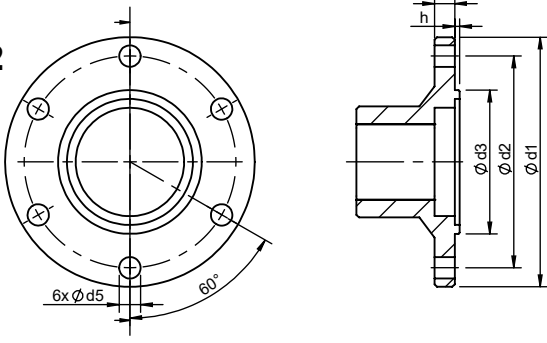
01

14.02.2019

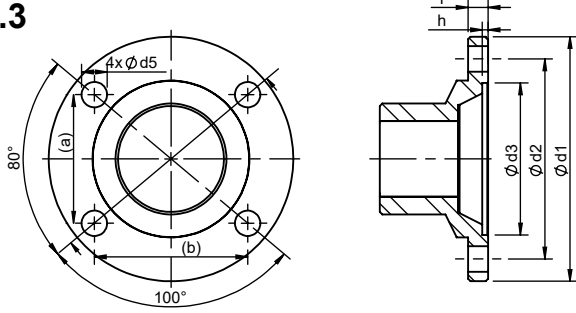
3/3

Rev. Date

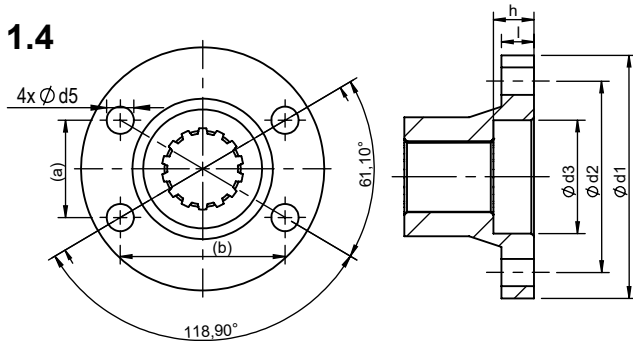
1.1  
1.2



1.3



1.4

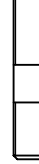


|     | $\varnothing d1$ | $\varnothing d2$ | $\varnothing d3$ | $\varnothing d5$ | l  | h   | P [°] | (a) x (b) |
|-----|------------------|------------------|------------------|------------------|----|-----|-------|-----------|
| 1.1 | 100              | 84               | 57               | 8,1              | 8  | 2,3 | 6     | -         |
| 1.2 | 90               | 74,5             | 47               | 8,1              | 8  | 2,3 | 6     | -         |
| 1.3 | 97               | 79,37            | 60,32            | 10,1             | 8  | 2,3 | 4     | 51 x 60,8 |
| 1.4 | 90               | 70,83            | 42               | 10,1             | 12 | 9   | 4     | 36 x 61   |

All dimensions are mm.

(PTO Mounting Parts)

5

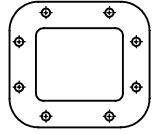


6] & .



6] & .

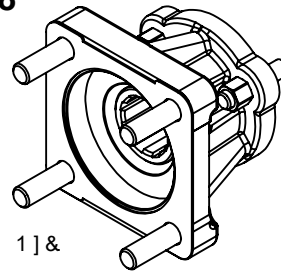
7



1] &

ISO Adapter

8



1] &

UNI Pump Mounting Parts

5

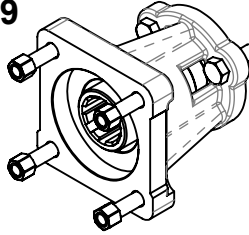


3] & .



3] & .

9



| No  | Code        | Description            | No | Code     | Description    |
|-----|-------------|------------------------|----|----------|----------------|
| 1.1 | C06-083-2   | ISO 7646-100x6x8       | 9  | AKP.PP.1 | GC'5 8 5 DH9 F |
| 1.2 | C06-083-3   | ISO 7646-90x6x8        |    |          |                |
| 1.3 | C06-083-1   | ISO 7647-SAE 1300x4x10 |    |          |                |
| 1.4 | C06-185     | Ø90 : B; 9             |    |          |                |
| 5   | T07-004     | M10x1,5x45 mm SHI 8    |    |          |                |
| 6   | T08-001     | M10x1,5 BI H           |    |          |                |
| 7   | T04-068     | ; 5 G?9H               |    |          |                |
| 8   | AKP.PP.2.52 | GC'5 8 5 DH9 F         |    |          |                |

- Kozmaksan has all rights to change information in this catalogue without announcing it. This document is representing general information. It is not a contract.  
- All information belongs to only PTO/Split Shaft. Do not use PTO/Split Shaft, if it is not suitable for your engine and main transmission.  
- Pumps, shafts and other parts should not be longer or heavier than approved distance and weight by the manufacturer of main transmission and engine.

KozmaksanPTO

kozmaksanpto

kozmaksan-hydraulics-pt



**VEHICLE TYPE**

**HYUNDAI**

**TRANSMISSION TYPE**

**T060S5 (5,810) T/M**

Kozmaksan Hyundai Power Take OFFs designed for Hyundai trucks. Kozmaksan Hyundai PTOs has Single output model, Side Mounting type option and available for UNI&ISO mounting housing or suitable for flange connections.

Applications;

- Garbage Truck
- Crane Truck
- Dump Truck

Vehicle Type

HYUNDAI

PNEUMATIC

SIDE MOUNTING

Transmission Type

T060S5 (5,810) T/M

HYD.06.60S5.H

Product Code

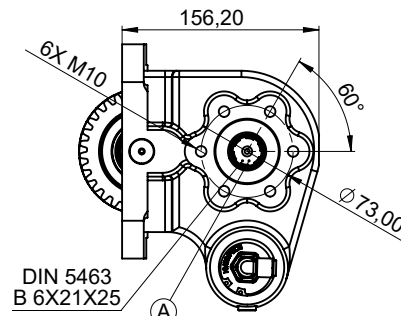
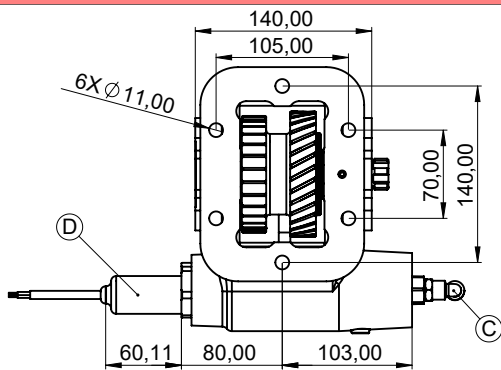
00

09.10.2019

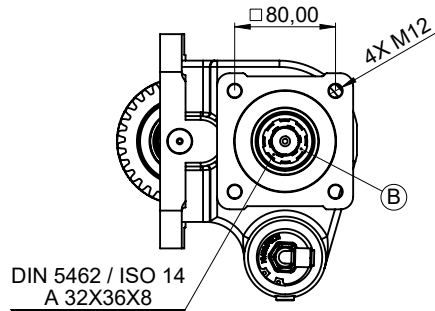
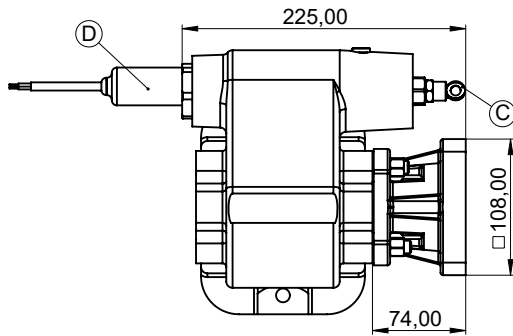
2/5

Rev. Date

## UNI OUTPUT



## ISO OUTPUT



- |   |   |
|---|---|
| A | DIN 5463 6X21X25 - UNI 3 Bolt Output          |
| B | ISO 14 - DIN 5462 8X32X36 - ISO 4 Bolt Output |
| C | Air Inlet R 1/4"                              |
| D | Engage/Disengage Sensor (Opt.)                |
|   |   |
|   |   |
|   |   |
|   |   |

|                    | UNI Output | ISO Output |  |
|--------------------|------------|------------|--|
| Power(kW)@1000 RPM | 23         | 23         |  |
| Max. Torque (Nm)   | 220        | 220        |  |
| Weight (Kg)        | 12,50      | 13,70      |  |
| Ratio              | 1/1,08↓    |            |  |
|                    |            |            |  |
| Mounting Type      | Left Side  |            |  |
| Sense of Rotation  |            |            |  |

- Kozmaksan has all rights to change information in this catalogue without announcing it. This document is representing general information. It is not a contract.  
 - All information belongs to only PTO/Split Shaft. Do not use PTO/Split Shaft, if it is not suitable for your engine and main transmission.  
 - Pumps, shafts and other parts should not be longer or heavier than approved distance and weight by the manufacturer of main transmission and engine.

KozmaksanPTO

kozmaksanpto

kozmaksan-hydraulics-pto

Vehicle Type

HYUNDAI

MECHANIC CONTOL

SIDE MOUNTING

Transmission Type

T060S5 (5,810) T/M

HYD.06.60S5.M

Product Code

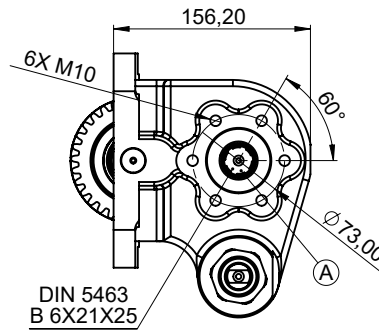
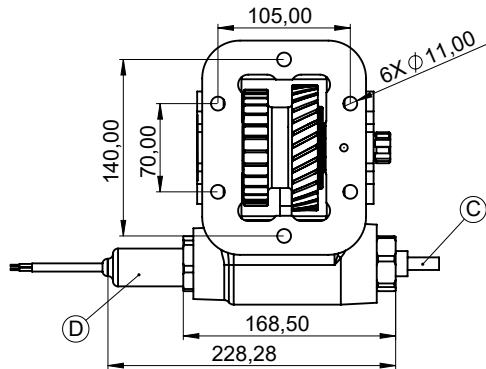
00

09.10.2019

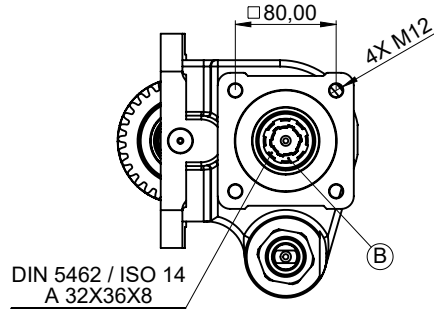
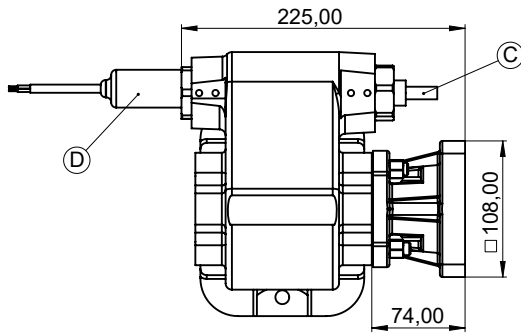
3/5

Rev. Date

## UNI OUTPUT



## ISO OUTPUT



|   |   |
|---|---|
| A | DIN 5463 6X21X25 - UNI 3 Bolt Output          |
| B | ISO 14 - DIN 5462 8X32X36 - ISO 4 Bolt Output |
| C | Mechanic Control System                       |
| D | Engage/Disengage Sensor (Opt.)                |
|   |   |
|   |   |
|   |   |
|   |   |

|                    | UNI Output | ISO Output |  |
|--------------------|------------|------------|--|
| Power(kW)@1000 RPM | 23         | 23         |  |
| Max. Torque (Nm)   | 220        | 220        |  |
| Weight (Kg)        | 12,50      | 13,70      |  |
| Ratio              | 1/1,08↓    |            |  |
|                    |            |            |  |
| Mounting Type      | Left Side  |            |  |
| Sense of Rotation  |            |            |  |

- Kozmaksan has all rights to change information in this catalogue without announcing it. This document is representing general information. It is not a contract.  
 - All information belongs to only PTO/Split Shaft. Do not use PTO/Split Shaft, if it is not suitable for your engine and main transmission.  
 - Pumps, shafts and other parts should not be longer or heavier than approved distance and weight by the manufacturer of main transmission and engine.

KozmaksanPTO

kozmaksanpto

kozmaksan-hydraulics-pto

Vehicle Type

HYUNDAI

VACUUM CONTROL

SIDE MOUNTING

Transmission Type

T060S5 (5,810) T/M

HYD.06.60S5.V

Product Code

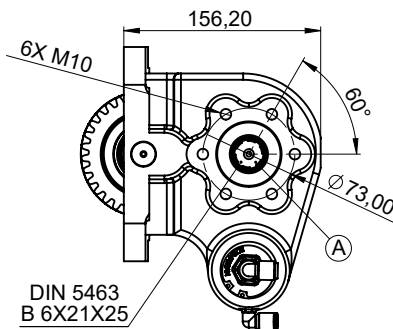
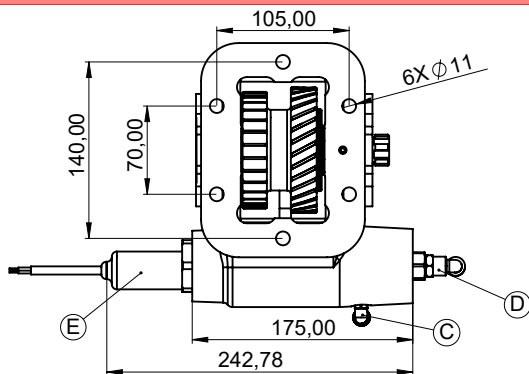
00

09.10.2019

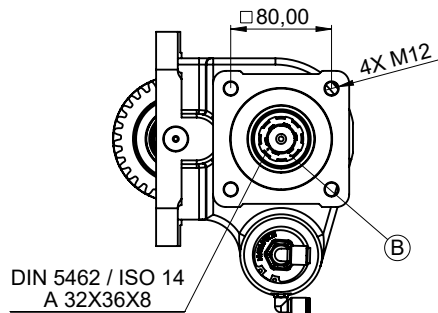
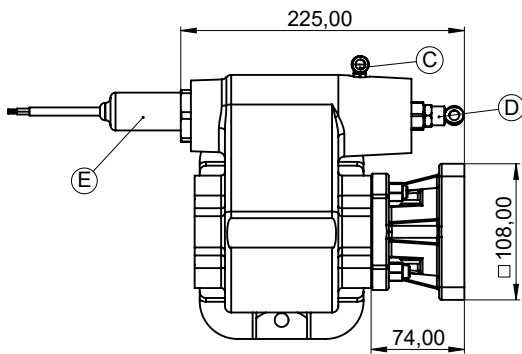
4/5

Rev. Date

## UNI OUTPUT



## ISO OUTPUT



- |   |   |
|---|---|
| A | DIN 5463 6X21X25 - UNI 3 Bolt Output          |
| B | ISO 14 - DIN 5462 8X32X36 - ISO 4 Bolt Output |
| C | Vacuum Inlet R 1/8"                           |
| D | Vacuum Inlet R 1/4" (Opt.-Double Actuator)    |
| E | Engage/Disengage Sensor (Opt.)                |
|   |   |
|   |   |
|   |   |
|   |   |

|                    | UNI Output | ISO Output |  |
|--------------------|------------|------------|--|
| Power(kW)@1000 RPM | 23         | 23         |  |
| Max. Torque (Nm)   | 220        | 220        |  |
| Weight (Kg)        | 12,50      | 13,70      |  |
| Ratio              |            | 1/1,08↓    |  |
|                    |            |            |  |
| Mounting Type      | Left Side  |            |  |
| Sense of Rotation  |            |            |  |

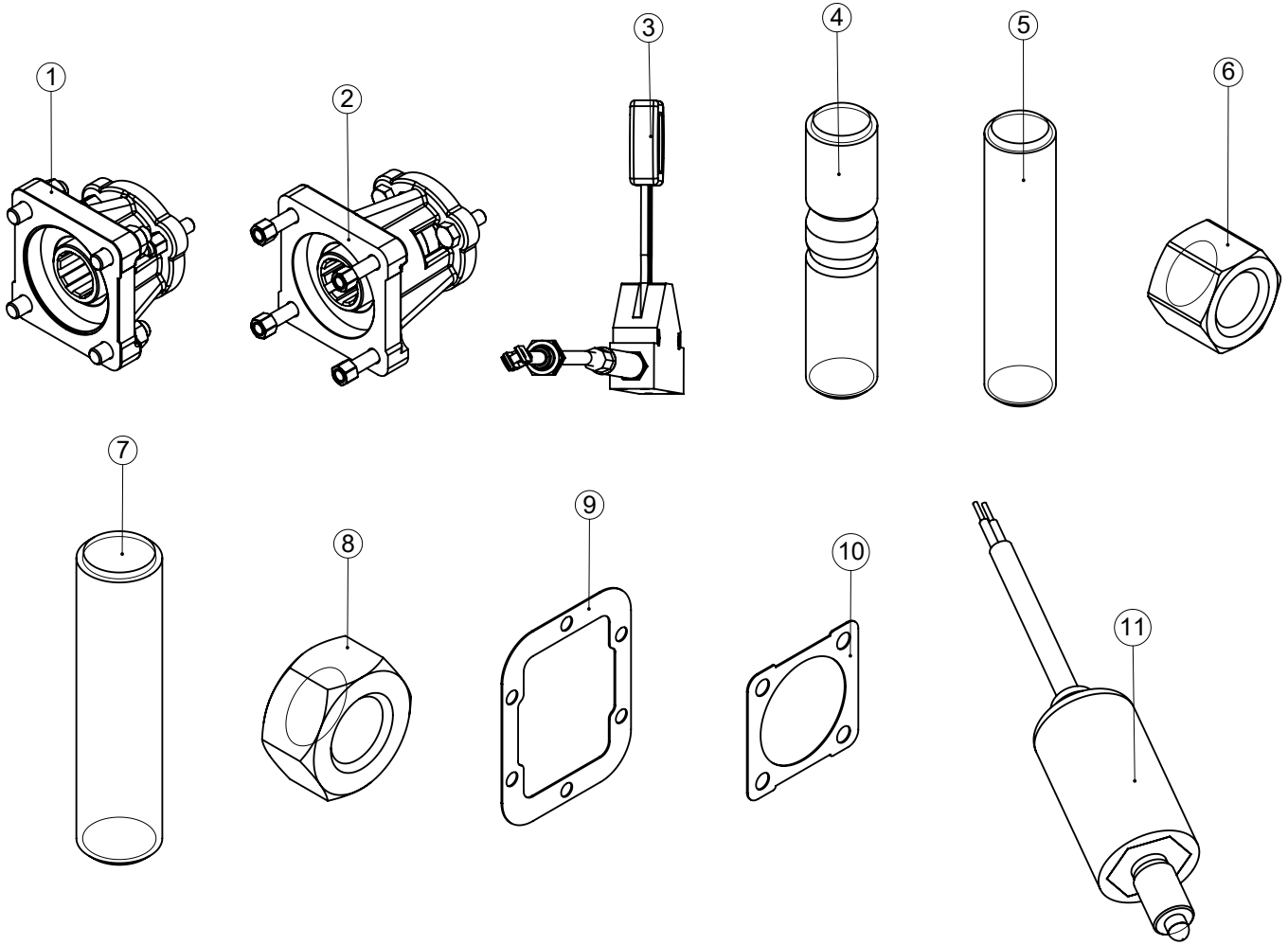
- Kozmaksan has all rights to change information in this catalogue without announcing it. This document is representing general information. It is not a contract.  
 - All information belongs to only PTO/Split Shaft. Do not use PTO/Split Shaft, if it is not suitable for your engine and main transmission.  
 - Pumps, shafts and other parts should not be longer or heavier than approved distance and weight by the manufacturer of main transmission and engine.

KozmaksanPTO

kozmaksanpto

kozmaksan-hydraulics-pto





| No | Code          | Description                    | No | Code    | Description                    |
|----|---------------|--------------------------------|----|---------|--------------------------------|
| 1  | AKP.PP.2.52   | UNI TO ISO Adapter (Short)     | 9  | T04-019 | Gasket (1mm)                   |
| 2  | AKP.PP.1      | UNI TO ISO Adapter (Long)      | 10 | T04-002 | 80X80 Gasket 1mm               |
| 3  | KTP50-55.3500 | 3.5 MT Control Cable and Lever | 11 | T12-029 | Engage/Disengage Sensor (Opt.) |
| 4  | T07-017       | M10X50 Stud                    | 12 |         |                                |
| 5  | T07-004       | M10X45 Stud 3 pcs              | 13 |         |                                |
| 6  | T08-001       | M10X1,5 Stud 6+3 pcs           | 14 |         |                                |
| 7  | T07-003       | M12X50 Stud 4 pcs              | 15 |         |                                |
| 8  | T08-006       | M12 Nut 4 Pcs                  | 16 |         |                                |

- Kozmaksan has all rights to change information in this catalogue without announcing it. This document is representing general information. It is not a contract.  
- All information belongs to only PTO/Split Shaft. Do not use PTO/Split Shaft, if it is not suitable for your engine and main transmission.  
- Pumps, shafts and other parts should not be longer or heavier than approved distance and weight by the manufacturer of main transmission and engine.

KozmaksanPTO

kozmaksanpto

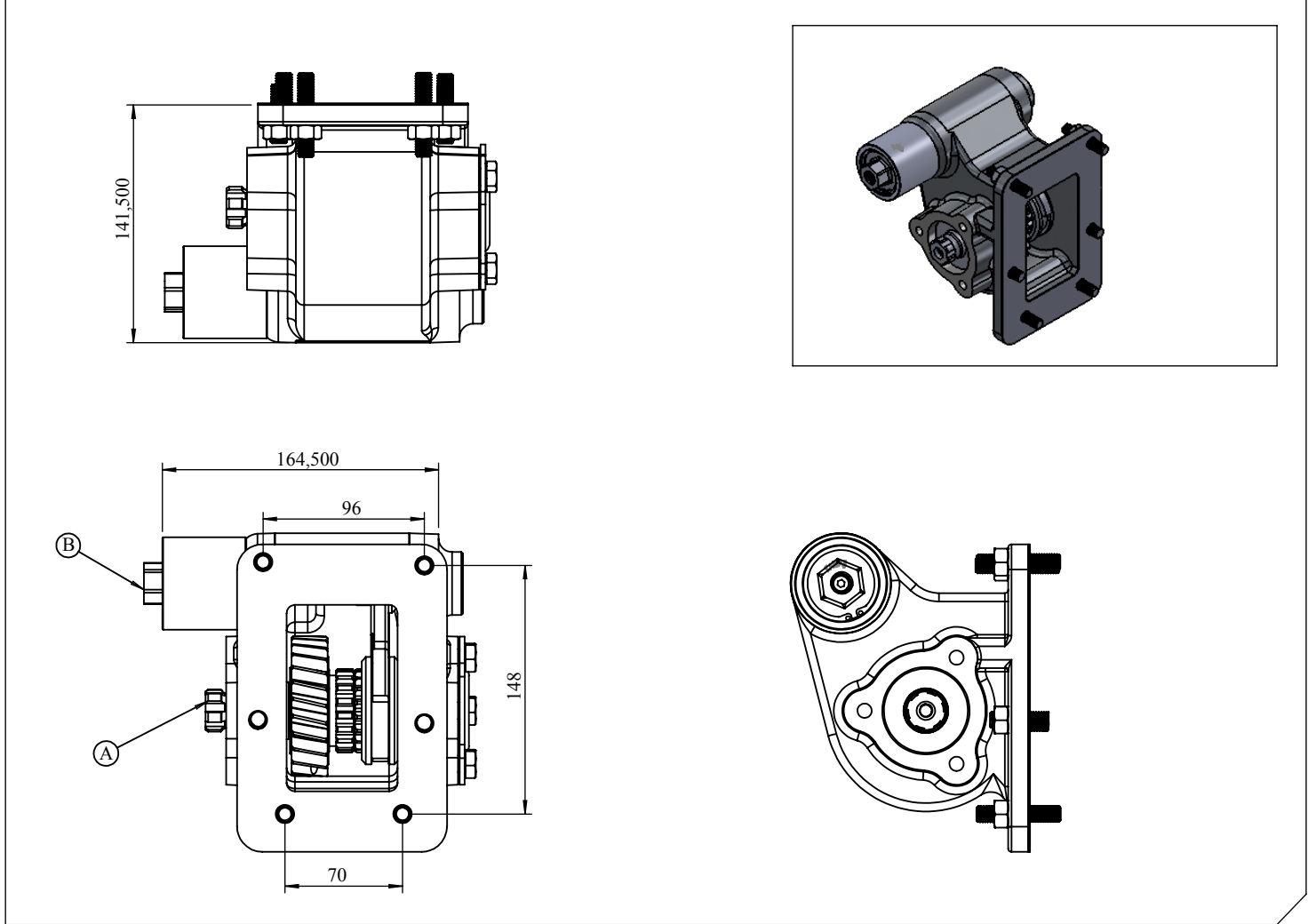
kozmaksan-hydraulics-pto

|                     |                       |
|---------------------|-----------------------|
| <b>Vehicle Type</b> | HD 75 / HD 78 HYUNDAI |
| <b>Gearbox Type</b> | 5S 6853               |

|                         |                           |
|-------------------------|---------------------------|
| <b>Product Code</b>     | <b>HYD.01.6853V.CT.KF</b> |
| <b>Revision No-Date</b> | 01/20-07-2017             |



### Products Views



### Component Details

- Ⓐ : PTO Çıkışı (Standart DIN 5463 6X21X25 UNI 3 Delikli)  
Pistonlu pompaya akuple (4 delikli ISO bağlantı)  
Kaplınli (flaşlı bağlantı)
- Ⓑ : Vakum Girişi R1/4"

- Ⓐ : PTO Output (Standard DIN 5463 6X21X25 UNI 3 Bolt)  
Direct mounting ISO 4 bolt mtg. adapter  
Drive flange
- Ⓑ : Vacuum Inlet R 1/4"

### Technical Details

| Outputs | Power     | Torque        |      | Internal Ratio | Mounting Side | Control Type |
|---------|-----------|---------------|------|----------------|---------------|--------------|
|         | @1000 rpm | Nm (@1000rpm) | Kgm  |                | Weight        |              |
| A       | 13 kW     | 135           | 13.7 | 1/1            | LEFT SIDE     | VACUUM       |
|         |           |               |      |                | 6<br>kg       |              |